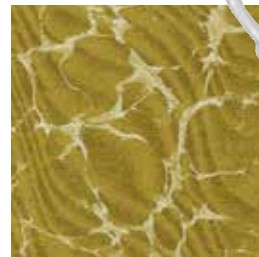


DOROTHÉE MEILICHZON

Since Dorothée founded her studio, Chzon, she has risen to the top of international hospitality design, bringing a fresh eye to hotels, restaurants and bars. Her look is about modern luxury, creating a convivial atmosphere with a nod to the best design of the 20th century, from the twenties to the eighties. As well as working on many Parisian projects, including restaurants Balagan and Grands Boulevards, she recently brought a dose of Gallic hipness to London with the design of the Henrietta Hotel. chzon.com



“I discovered Design Centre, Chelsea Harbour, thanks to my mother, when I started my company in 2009. Since then I regularly go there to discover the new collections of fabrics and wallpapers”



CLOCKWISE FROM BOTTOM RIGHT: 'Tea 5' pendant, Original BTC. 'Marmor' fabric (30069 007), Rubelli Venezia at Rubelli/Donghia. 'Scale' wallcovering (49101), Arte. 'Teddy' fabric (F2500017), mousse, Pierre Frey. 'Sing' fabric (30060/013), Rubelli Venezia at Rubelli/Donghia. 'Narina' wallcovering (109/10045), Cole & Son. 'Verdure' wallcovering (310431), tapestry green, Zoffany at Style Library