



LONDON  
**DESIGN**  
WEEK 2014

**SPRING'S ULTIMATE  
INTERIORS EVENT**

**Trade Preview  
9-11 MARCH**

**All Welcome  
12-14 MARCH**

**Open 10am - 6pm  
FREE ENTRY**

**OVER 500 BRANDS  
99 SHOWROOMS  
ONE ADDRESS**

**+ outside  
participants  
in Chelsea**

**DESIGN CENTRE, CHELSEA HARBOUR**

**CONNECT | CONVERSE | CREATE**

# YOU ARE INVITED TO LONDON DESIGN WEEK 2014

Join creative talents at the forefront of global interiors for a thrilling exchange of ideas and collection launches. This dynamic event is the perfect mix of style, imagination and directional design. Inspiring as it is influential, it promises to shape the way we live today.

## CONVERSATIONS IN DESIGN

Top names take the stage

## ACCESS ALL AREAS

Enjoy, discover and think outside the box

## PLANET STYLE

The latest looks from around the world

## CREATIVE ENCOUNTERS

Meet like-minded designers, architects and stylesetters

## BREAKING NEWS

Show blog, pinboard, Twitter, Pinterest

## ON THE RADAR

Pop-ups, *Tatler* Restaurant, book signings, treasure trail plus much more

### SNAP IT SHARE IT #LDW2014

Furniture Fabrics  
Lighting Carpets  
Decorative  
Accessories  
Outdoor living  
Wall coverings  
Hardware Flooring  
Tiles Kitchens  
Bathrooms...

## WHAT'S ON...



### EVERY DAY

**10am-6pm:** 'The #bigsmallbath Event' at Victoria + Albert Baths

**10am-6pm:** 'Made in New York' at Remains Lighting

**10am-6pm:** 'Robert Allen Candy Bar'

**10am-6pm:** 'Safari at The Silk Gallery'

**10am-6pm:** 'While You Wait Bespoke Rug Design Service' at Wool Classics

**10am-6pm:** 'Lucky Draw' at Whistler Leather



### SUNDAY 9 MARCH

**10am:** 'Sunday Kitchen'

To launch London Design Week 2014 join us for brunch. A world-renowned chef serves up a feast of culinary inspiration in the *Tatler* Restaurant.

**10am-5pm:** 'Création Baumann Spring Picnic' with Irma Faeh

**10am-6pm:** 'Meet the Designers' with Mark Butcher & Alex McKenzie of Mark Alexander at Romo

**10am-6pm:** 'Arctic Adventure' at Chase Erwin

**10am-6pm:** 'Bring On Summer' at StudioTex

**10am-6pm:** 'Launch of the Harbour, Twist & Knot and Cambridge Vol. II Collections' at Samuel & Sons Passementerie



**TICKET 2.30-3.30pm:** Conversations in Design 'Collected Cool - Traditional Style Redefined'

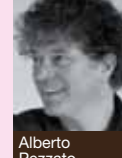
Acclaimed designer and tastemaker Jay Jeffers brings his signature cool, collected style to every project. Named by *Elle Decor* in its A-List of top US interior designers, he is known for his inventive use of colour, pattern and a carefully edited mix of art and furnishings. Find out why his designs are synonymous with eclecticism, wit and glamour. Book ticket: £10

**2-4pm:** 'Porta Romana Food Heroes' with Vicki Church

**3pm:** 'Alberto Pezzato, Design Director at Rubelli, Celebrates the 125 Year Anniversary of Rubelli Venezia' talk at Rubelli/Donghia

**4pm:** Meet the Author

Jay Jeffers signs copies of *Collected Cool: The Art of Bold, Stylish Interiors*



### MONDAY 10 MARCH

**10am-5pm:** 'Meet the Designer' with Claire Vallis at Harlequin

**10am-6pm:** 'Bring On Summer' at StudioTex

**10am-6pm:** 'From Pottery to Interiors - Meet the Emma Bridgewater Design Team' at Sanderson

**10am-6pm:** 'Arctic Adventure' at Chase Erwin

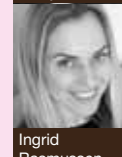
**10am-6pm:** 'Crestron Sensory Experience'

**10am-6pm:** 'Launch of the Harbour, Twist & Knot and Cambridge Vol. II Collections' at Samuel & Sons Passementerie

**10.30am-12.30pm:** 'Meet the Designer - A Discussion with Sheila Coombes' at Brian Yates

**11am:** Meet the Authors

Emily Wheeler & Ingrid Rasmussen sign copies of *Creative Living London*



**11am:** 'Breakfast with Baxter: Artisan Series' at SA Baxter Architectural Hardware

**11.30am:** 'Made in France' presentation with Patrick and Pierre Frey

**12-12.30pm:** 'Storage Wars' talk and drinks with George Khachfe at Poliform

**12-2pm:** 'Jazz Age Cocktails' at Top Floor Rugs/Wood

**12-2pm:** 'Working Lunch with ALP\_ Carpets' with Felix Losanda and Teresa Arevalo at Interior Supply

**1-2pm:** 'Made in England: Cider with Rosie' at Simpsons Mirrors & Furniture

**1-5pm:** 'Celebrate the Beauty in Nature' Champagne and canapés at Edelman Leather

**1.30pm:** 'Hand Blocked Wallpaper - A Celebration of Watts Archive' talk at Watts of Westminster

**1.30-5pm:** 'Beach Party' cocktails at R.I.M Tile Boutique

**1.30pm:** 'Meet the Designer - A Discussion with Natasha Marshall' at Wemyss

**2pm:** 'From Canvas to Cloth - A Discussion' with Jessica Zoob and Emily Mould at Romo

**2.30pm:** 'J. Robert Scott Introduces Steel' presentation with Richard Chilcott

**2-4pm:** 'A Taste of Virginia' at McKinnon and Harris

**2-4pm:** 'Porta Romana Food Heroes' with Vicki Church

**2-5pm:** 'Hand Massage and Champagne' at Victoria + Albert Baths

**3pm:** 'Call of the Wild - The New English Ethnic Collection from Lewis & Wood' talk with Melissa White, Flora Roberts, Su Daybell and Stephen Lewis in conversation with Charlotte Abrahams at Lewis & Wood

**3.30-6pm:** 'Baker Presents The Jacques Garcia Collection' reception at Baker

**4-5pm:** 'Luxury Wall Coverings Explained' at Jason D'Souza

**4.30pm:** 'Alberto Pezzato, Design Director at Rubelli, Celebrates the 125 Year Anniversary of Rubelli Venezia' talk at Rubelli/Donghia

**5pm:** 'Decca Launches Elan - Elegant Furniture That Bridges All Markets' at Decca Furniture



### TUESDAY 11 MARCH

**10am-1pm:** 'Meet the Designer' with Claire Vallis at Harlequin

**10am-6pm:** 'Exclusive Look at Nanz's New Studio Line Collection for 2014' at The Nanz Company

**10am-6pm:** 'Bring on Summer' at StudioTex

**10am-6pm:** 'Arctic Adventure' at Chase Erwin

**10am-6pm:** 'Crestron Sensory Experience'

**10am-6pm:** 'Launch of the Harbour, Twist & Knot and Cambridge Vol. II Collections' at Samuel & Sons Passementerie

**11am:** 'Teasel England - Beautiful Wool Made in England' at Colony



**TICKET 11.30am-12.30pm:** Professional Practice Session

'Designing Your Social Media Around You'

Social media is an essential marketing tool. But do you know how to use it? Join social and digital marketing specialist Eva Keogan as she shares effective ways to make the best of this new world of conversation, community and connection. As founder of Home of Social she has worked with leading brands such as Save the Children, relaunched hmv and lastminute.com, as well as entrepreneurs, designers, architects and creatives. Book ticket: £10



**11.30am:** 'Compendium of Classic Design Anecdotes - In Conversation with Philip Vergeylen and Paolo Moschino' at Nicholas Haslam

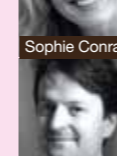
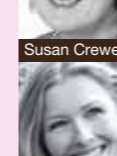
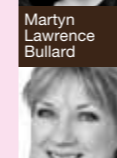
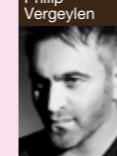
**1.30-5pm:** 'Beach Party' cocktails at R.I.M Tile Boutique

**2pm:** 'Where It Starts' presentation with Neisha Crosland at Turnell & Gigon

**TICKET 3pm-4pm:** Conversations in Design hosted by *House & Garden*

'A Well-Travelled Eye - Worldly Interiors Envisioned'

Award-winning interior designer and TV personality Martyn Lawrence Bullard is known for his opulent design and celebrity clientele including Tommy Hilfiger, Cher, Eva Mendes and Sharon Osbourne. Based in Los Angeles, his multi-faceted work ranges from residential to commercial projects including hotels in Hawaii, Jamaica, Switzerland and Miami. He has turned his prolific career into a brand, developing decorative ranges for leading companies as well as collections under his own label. In conversation with editor Susan Crewe, find out what makes him tick, and how his global travel feeds his inquisitive nature and love of beauty. Followed by tea in the Ann Sacks showroom. Book ticket: £10



### WEDNESDAY 12 MARCH

**10am-6pm:** 'Crestron Sensory Experience'

**TICKET 11.30am-12.30pm:** Conversations in Design hosted by *Homes & Gardens*

'From Cookery to Crockery - My Life As A Designer'

Designer and cook Sophie Conran talks to executive editor Giles Kime about her unique sense of style and a wholly individual approach to the home. From her enchanting take on interiors to working on cutlery, kitchen and porcelain collections, discover why 'one life, live it well' is her motto. Book ticket: £10

**2.30pm:** Meet the Author

Nina Campbell signs copies of *Nina Campbell Interiors*

**3-5.30pm:** 'Afternoon Tea with Global Creative Director Jean-Pierre Tortil' at Tai Ping Carpets



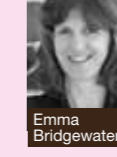
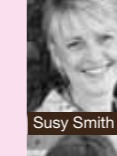
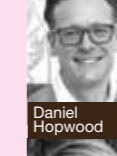
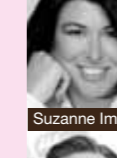
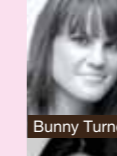
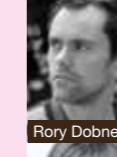
**TICKET 3pm-4pm:** Conversations in Design hosted by *Homes & Property*

'Think Creative, Think Home'

Interiors writer Judith Wilson gives the lowdown on the power of creative thinking for an effortless, beautiful home. Get inspired as she demonstrates that architecture, pattern and colour all make a brilliant springboard for experimental thought patterns. Learn how well planned spaces can work perfectly for their occupants and their lifestyles. The longer you think, the more beautiful your home. Book ticket £10

**4.30pm:** Meet the Author

Judith Wilson signs copies of *Think Home*



### THURSDAY 13 MARCH

**10am-6pm:** 'Crestron Sensory Experience'

**TICKET 11.30am-12.30pm:** Conversations in Design hosted by *Livingetc*

'Creating Style & Personality in Your Home'

Get inspired with three style authorities - interior designer Bunny Turner and artist/designers Rory Dobner and Ptolemy Mann - as they share their imaginative take on design with editor Suzanne Imre. Packed with original ideas and exciting possibilities, this session promises thought-provoking ways to take interiors to a new level. Book ticket: £10

**TICKET 3.30pm-4.30pm:** Conversations in Design hosted by *Tatler*

'Tea with *Tatler* - Design Dilemmas Answered'

Join Daniel Hopwood, interior designer, president-elect of the BIID and Judge on BBC 2's 'The Great Interior Design Challenge', as he talks to retail editor Karen Deeks on how to achieve the home of your dreams. Get invaluable advice on the practical and aesthetic benefits of choosing an interior designer and how to find the right one for you. With experience not only working with suppliers and contractors, but also knowledge of spatial planning, colour, texture, furniture, lighting and art, find out why a professional can save you time, anxiety and costly mistakes. Expect insider tips, creative design solutions and bags of inspiration. Book ticket including tea: £10

**4.30pm:** Meet the Judge

Daniel Hopwood signs copies of *The Great Interior Design Challenge*

### FRIDAY 14 MARCH

**TICKET 11.30am-12.30pm:** Conversations in Design hosted by *Country Living*

'Beyond the Kitchen'

Emma Bridgewater talks to editor Susy Smith about her unique approach to design, business and how she has established an authentic British look that is adored across the globe. Discover how her work reflects her genuine passions in life and get the inside track on her collaboration with Sanderson for her first ever fabric and wallpaper collection. Followed by refreshments in the Sanderson showroom. Book ticket: £10

**1pm:** Meet the Author

Emma Bridgewater signs copies of *Toast & Marmalade and Other Stories*

### CONVERSATIONS IN DESIGN INFORMATION

**£10** BOOKING HOTLINE 020 7352 1900  
or visit [www.dcch.co.uk](http://www.dcch.co.uk)



# LONDON DESIGN WEEK 2014

## SPRING'S ULTIMATE INTERIORS EVENT

**EXHIBITORS** Discover what is directional in the world of design from:

ABBOTT & BOYD | ALTFIELD | ALTON-BROOKE | ANN SACKS | ARMANI/CASA | BAKER | BAKER LIFESTYLE | BEACON HILL | BELLA FIGURA | BESSELINK & JONES | BLENHEIM CARPETS | BOLIER BY DECCA FURNITURE | BOOKSHOP | BRIAN YATES | BRUNSCHWIG & FILS | C & C MILANO | CASSINA | CHAPLINS | CHASE ERWIN | CHRISTOPHER HYDE LIGHTING | CLIVE CHRISTIAN | COLE & SON | COLEFAX AND FOWLER | COLONY | CREATION BAUMANN | CRESTRON | DAVID SEYFRIED LTD | DAVIDSON | DECCA FURNITURE | DECORUS FURNITURE | DEDAR | EDELMAN LEATHER | EVITAVONNI | FENDI CASA | FLEXFORM | FOX LINTON | GP&J BAKER | HARLEQUIN | HENRY BERTRAND | HRW ANTIQUES | INTERDESIGN | INTERIOR SUPPLY | J. ROBERT SCOTT | JACARANDA CARPETS | JASON D'SOUZA | JEAN MONRO | KRAVET | LEE JOFA | LELIEVRE | LEWIS & WOOD | LIZZO | MARVIC TEXTILES | MCKINNON AND HARRIS | MULBERRY HOME | THE NANZ COMPANY | NICHOLAS HASLAM | NOBILIS | ORIGINAL BTC | PIERRE FREY | POLIFORM | POLTRONA FRAU | PORADA | PORTA ROMANA | RAMM, SON & CROCKER | REMAINS LIGHTING | R.I.M TILE BOUTIQUE | ROBERT ALLEN | ROMO | RUBELLI/DONGHIA | SA BAXTER ARCHITECTURAL HARDWARE | SAHCO | SAMUEL HEATH | SAMUEL & SONS PASSEMENTERIE | SANDERSON | THE SILK GALLERY | SIMPSONS MIRRORS & FURNITURE | SOLID WOODEN DOORS | STARK CARPET | STARK FABRIC | STUDIOTEX | SUMMIT FURNITURE | TAI PING CARPETS | THREADS AT GP&J BAKER | TIM PAGE CARPETS | TISSUS D'HELENE | TOP FLOOR RUGS/WOOD | TUFENKIAN ARTISAN CARPETS | TURNELL & GIGON | TURNSTYLE DESIGNS LTD | VAUGHAN | VIA ARKADIA (TILES) | VICTORIA + ALBERT BATHS | WATTS OF WESTMINSTER | WEMYSS | WHISTLER LEATHER | WIRED CUSTOM LIGHTING | WOOL CLASSICS | ZIMMER + ROHDE | ZOFFANY | PLUS DESIGNERS GUILD, OSBORNE & LITTLE AND KINGCOME SOFAS IN CHELSEA

## HOW TO GET HERE

**COURTESY TRANSPORT** Leave the car at home and arrive in style in a Range Rover kindly provided by Land Rover. The shuttle service leaves Sloane Square via participating Chelsea showrooms.

**BY TRAIN** Imperial Wharf, linking mainline stations Clapham Junction and Willesden Junction, connects to West Brompton, Olympia and Shepherd's Bush for the London Underground. For information: [www.tfl.gov.uk](http://www.tfl.gov.uk)

**BY BUS** The C3 runs between Earl's Court tube and Clapham Junction via Chelsea Harbour. The number 11 and 22 buses run along King's Road (alight at Lots Road).

**BY CAR** Design Centre, Chelsea Harbour is outside the congestion zone. There is a secure underground car park.

## FOR EVENT INFORMATION AND BREAKING NEWS:

[www.dcch.co.uk](http://www.dcch.co.uk)  
Tel: 020 7225 9166 or  
email [enquiries@dcch.co.uk](mailto:enquiries@dcch.co.uk)

## DESIGN CENTRE CHELSEA HARBOUR

99 showrooms, over 500  
international brands – one address

Lots Road, London SW10 0XE

 [#LDW2014](https://twitter.com/designcentrech)

 [designcentrech](https://www.pinterest.com/designcentrech)

All products shown throughout are available at Design Centre, Chelsea Harbour.

Information correct at time of going to press.