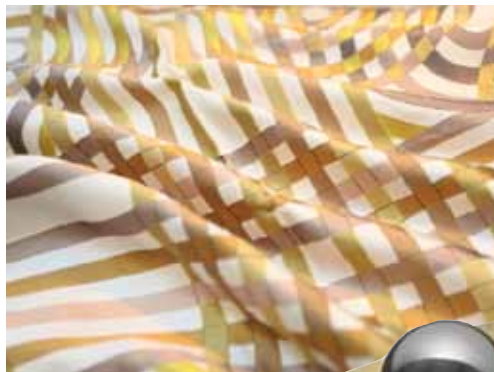


SIMON RAWLINGS

As creative director of David Collins Studio, Simon has been fundamental in defining and implementing its creative vision for over 16 years. Current high fashion projects include Kent & Curwen in New York and the global redesign of Jimmy Choo stores as well as The Ritz Carlton Residences, Bangkok. davidcollins.com



“I have always found the Design Centre to be a valuable and inspiring resource. Each of our projects are brought to life from a considered edit of the latest and more timeless collections on offer. My selection here for Spring is The Studio’s vision for texture, tone and warmth”

CLOCKWISE FROM TOP:
 ‘Spirographie’ detail (211056M02), souffre, Hermès at Dedar. ‘No 6364’ pull, burnished nickel and brass, The Nanz Company. ‘Dune’ fabric (211059M01), lune, Hermès at Dedar. ‘Normandy’ braid (977-51751), gris, Samuel & Sons Passementerie. ‘Sedona Suede’ (9252/02), taupe, Holly Hunt at Fox Linton. ‘Peaked Diamond Curved’ tile, (AS9504MOD), blue mist, Ann Sacks. (DORJ 104464A) carpet, Dorjee Collection at Stark Carpet. ‘Spirographie’ fabric (211056M02), souffre, Hermès at Dedar

